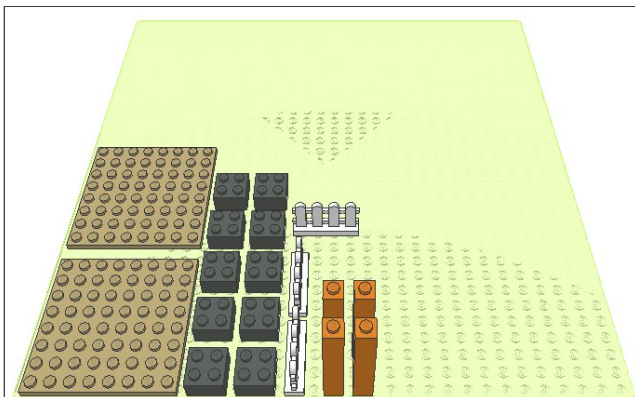
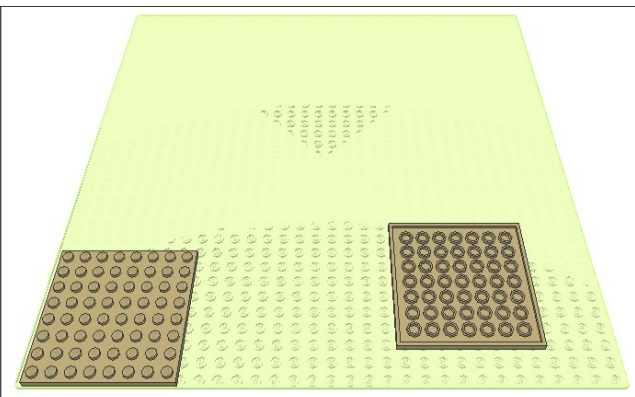


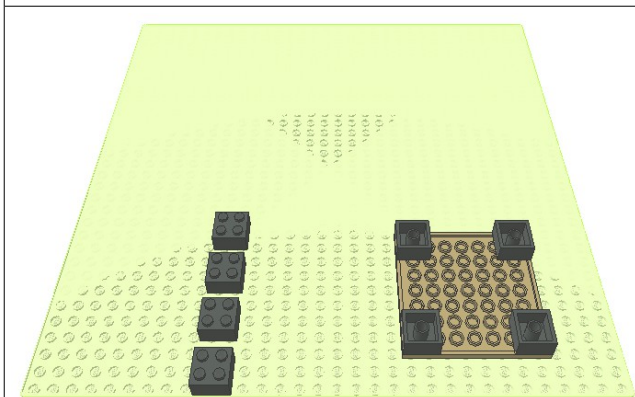
LEGO GAZEBO INSTRUCTIONS  
KIT DESIGN AND INSTRUCTIONS COPYRIGHT 2022 TERRY ERICKSON



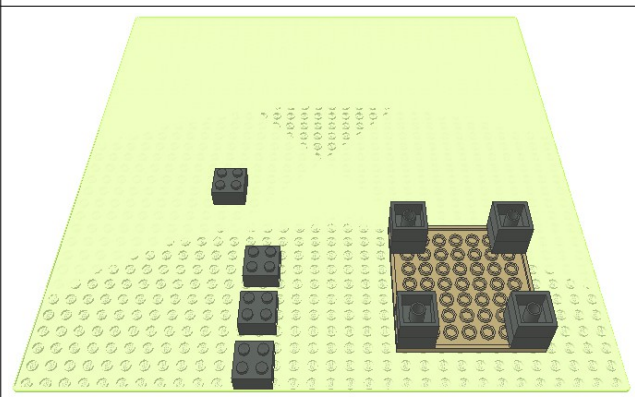
PARTS



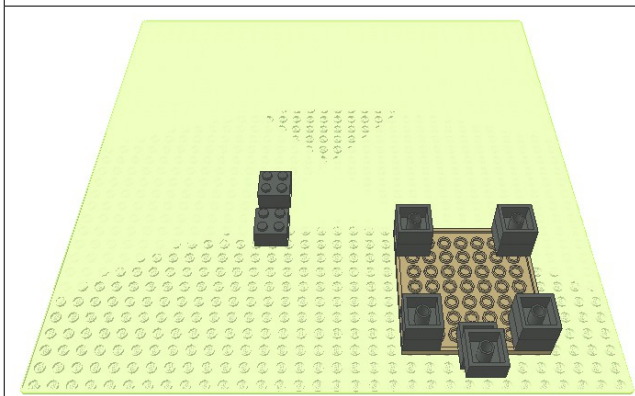
STEP 1, Upside down building



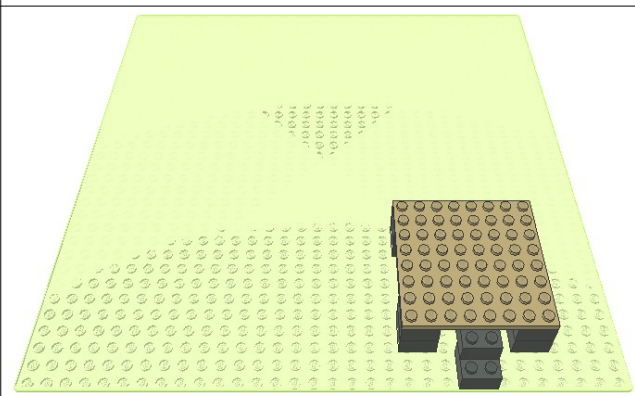
STEP 2



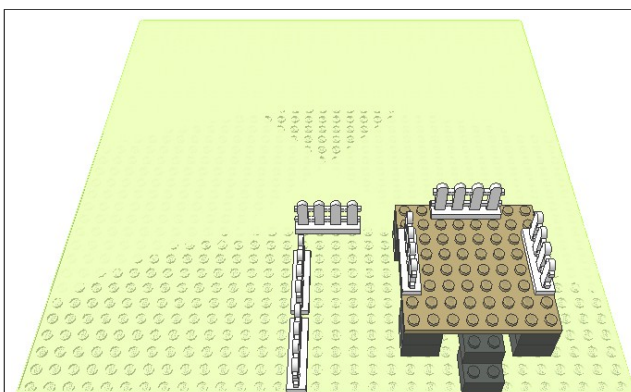
STEP 3



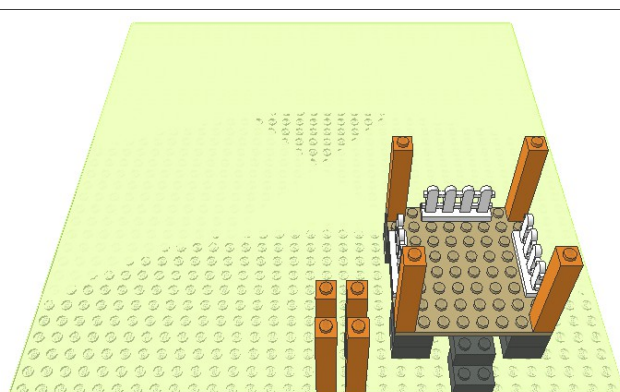
STEP 4



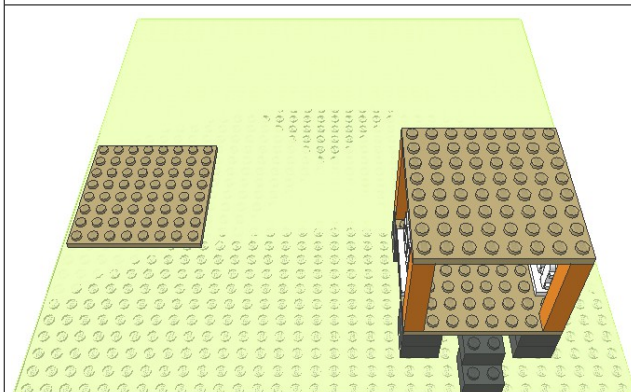
STEP 5, Flip build to right side up



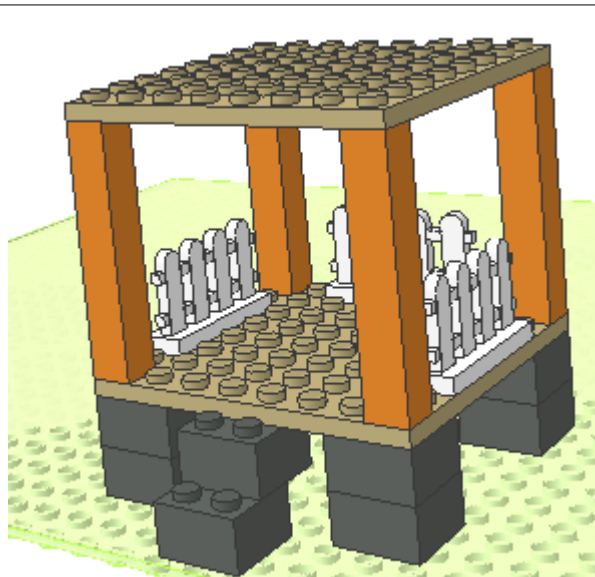
STEP 6



STEP 7



STEP 8



COMPLETED

#### PARTS LIST:

QUAN	DESIGN	COLOR	DIMENSION		USAGE
			--X--X--		-----
2	41539	Tan	8x	8x p	Floor/Roof
4	2453b	Orange	1x	1x 5	Column
10	3003	dk Gray	2x	2x 1	Legs/Steps
3	33303	white	1x	4x 2	Fence, 4 picket

#### NOTES:

- 1: The 1x1x5 columns can be replaced by 5 1x1 bricks.
- 2: The 2 2x2 steps can be replaced by 2 2x4 bricks for width.
- 3: The Gazebo is tall enough to have Minifigures placed inside.
- 4: There are many ways to decorate the top of the Gazebo.